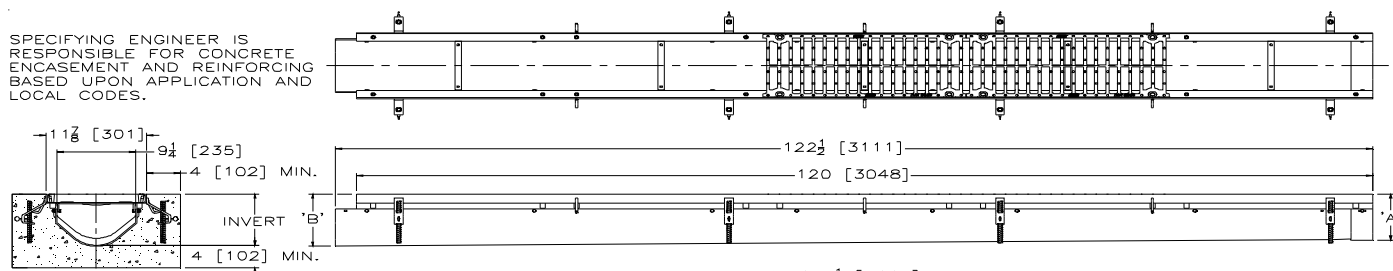


**ZFV812****12 [305] WIDE REVEAL FIBER REINFORCED  
VINYLESTER TRENCH DRAIN SYSTEM W/ STEEL FRAME**

TAG \_\_\_\_\_

Dimensional Data (inches and [ mm ]) are Subject to Manufacturing Tolerances and Change Without Notice

SPECIFYING ENGINEER IS  
RESPONSIBLE FOR CONCRETE  
ENCASEMENT AND REINFORCING  
BASED UPON APPLICATION AND  
LOCAL CODES.

Note: +Actual Channel length is 122 1/2 [3112] to allow for overlap.

**ENGINEERING SPECIFICATION: Zurn ZFV812**

Channels shall be 120 [3048] long, 12 [305] wide reveal and have a 9-1/4 [235] throat. Modular channel sections shall be made of Fiber Reinforced Vinylester. Shall have a positive mechanical connection between channel sections that will not separate during the installation. Channels shall weigh less than 5.05 lbs./[2.29kg] per linear foot, have a smooth, 3 [76] radiused self cleaning bottom with a Manning's coefficient of .009 and 1.04% or neutral 0% built in slope. Shall be provided with standard DGC grates that lock down to frame. Zurn 12 [305] wide reveal Ductile Iron Slotted Grate conforming to ASTM specification A536, Grade 80-55-06. Ductile Iron grate is rated class C per the DIN EN 1433 top load classifications. Supplied in 24 [608] nominal lengths with 13/16 [21] wide slots, and 1-1/2 [38] bearing depth. Grate has an open area of 81.1 sq. in per ft. [171,618 sq. mm per meter]. The #7 gage thick Heavy-Duty Carbon Steel Frame Assembly conforms to ASTM specification A36. Frames shall mechanically lock into the concrete surround at a maximum spacing of every 21 [533], with 14 anchors per 120 [3048]. Frames shall have rebar attachment brackets as standard to secure trench to its final location. Grate lockdown bars are to be integral to the frame. The frame is supplied with a powder coated finish. All welds must be performed by a certified welder per ASTM standard AWS D1.1. Channels have a 94-5VA Flammability Rating per ASTM D5048 and a V-0 flammability rating per ASTM D3801. Frames and Channels shall be produced in the U.S.A.

**PREFIX OPTIONS (Check/specify appropriate options)**

\_\_\_ ZFV Ten-foot Fiber Reinforced Vinylester \*

**SUFFIX OPTIONS (Check/specify appropriate options)****Outlet Adapters Add/Each**

\_\_\_ -E1 Closed End Cap  
\_\_\_ -E4 4 [102] No-Hub End Outlet  
\_\_\_ -E6 6 [152] No-Hub End Outlet  
\_\_\_ -E8 8 [203] No-Hub End Outlet  
\_\_\_ -U4 4 [102] No-Hub Bottom Outlet  
\_\_\_ -U6 6 [152] No-Hub Bottom Outlet  
\_\_\_ -U8 8 [203] No-Hub Bottom Outlet

**Frame Options**

\_\_\_ -CWF White Acid Resistant Coated Top Frame

**Grate Options (Load Classifications are per DIN EN1433)**

\_\_\_ -DC Ductile Iron Solid Cover - Class C  
\_\_\_ -DGC Ductile Iron Slotted Grate - Class C \*  
\_\_\_ -DGE Ductile Iron Slotted Grate - Class E  
\_\_\_ -DGF Ductile Iron Slotted Grate - Class F  
\_\_\_ -GDC Galvanized Ductile Slotted Grate - Class C  
\_\_\_ -GDE Galvanized Ductile Slotted Grate - Class E  
\_\_\_ -GDF Galvanized Ductile Slotted Grate - Class F  
\_\_\_ -GG Fiberglass Grate - Class A  
\_\_\_ -GHPDE Galvanized Heel-Proof Ductile Slotted Grate - Class E  
\_\_\_ -HPD Heel-Proof Ductile Slotted Grate - Class B  
\_\_\_ -HPDE Heel-Proof Ductile Slotted Grate - Class E

**MADE in the U.S.A.**

\_\_\_ -ADA-USA Meets Americans with Disabilities Act Requirements - Class C  
\_\_\_ -BG Galvanized Steel Bar Grate - Class D  
\_\_\_ -DGC-USA Ductile Iron Slotted Grate - Class C  
\_\_\_ -DGE-USA Ductile Iron Slotted Grate - Class E  
\_\_\_ -FG Fabricated Galvanized Steel Slotted Grate - Class A  
\_\_\_ -FS Fabricated Stainless Steel Slotted Grate - Class A  
\_\_\_ -GADA-USA Galvanized Ductile ADA Slotted Grate - Class C  
\_\_\_ -GDC-USA Galvanized Ductile Slotted Grate - Class C  
\_\_\_ -GDE-USA Galvanized Ductile Slotted Grate - Class E  
\_\_\_ -PG Perforated Galvanized Steel Grate - Class A  
\_\_\_ -PS Perforated Stainless Steel Grate - Class A  
\_\_\_ -RFG Reinforced Galvanized Slotted Grate - Class B

**Miscellaneous Options**

\_\_\_ -DB Bottom Dome Strainer  
\_\_\_ -JC Joint Connector  
\_\_\_ -VP Vandal-Proof Lockdown

\_\_\_ -RFS Reinforced Stainless Steel Slotted Grate - Class B  
\_\_\_ -RPG Reinforced Galvanized Perforated Grate - Class B  
\_\_\_ -RPS Reinforced Stainless Steel Perforated Grate - Class B  
\_\_\_ -SBG-L Stainless Steel Bar Grate - Class B

**REV.D DATE: 08/23/13 C.N. NO. 129846****PROD/DWG. NO. ZFV812**

\*REGULARLY FURNISHED UNLESS OTHERWISE SPECIFIED

ZURN INDUSTRIES, LLC ♦ SPECIFICATION DRAINAGE OPERATION ♦ 1801 Pittsburgh Ave. ♦ Erie, PA 16514

Phone: 814/455-0921 ♦ Fax: 814/454-7929 ♦ World Wide Web: www.zurn.com

In Canada: ZURN INDUSTRIES LIMITED ♦ 3544 Nashua Drive ♦ Mississauga, Ontario L4V1L2 ♦ Phone: 905/405-8272 Fax: 905/405-1292